

# Shannondale Ski Trails

Thornhill, Manitoba



To Carson's  
and back

Tempest Ridge

Moose Hill

Valley Chalet

Stormy Cutoff

Gully

Hump

Trail Map

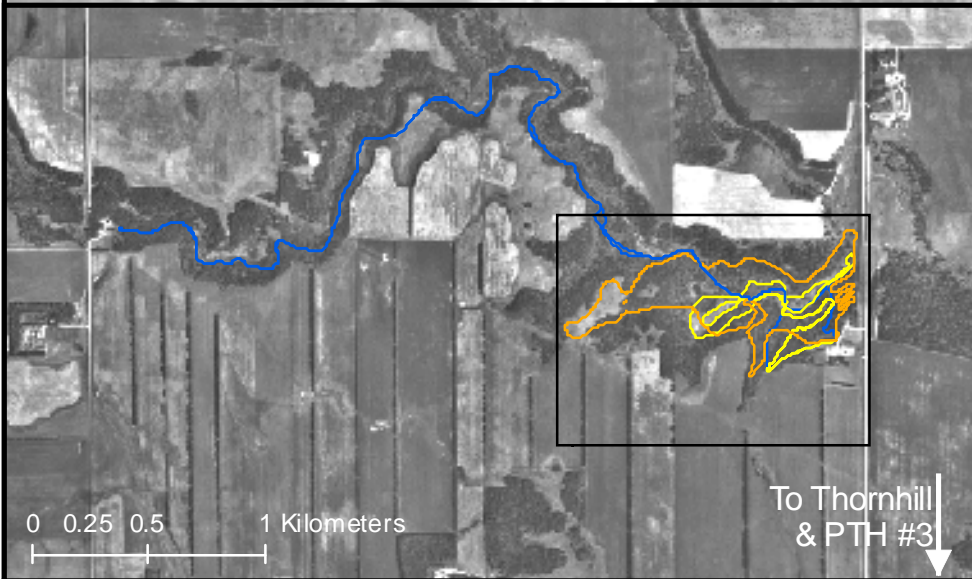
Wood Road

Zig  
Zag

Upper Chalet

Parking

0 25 50 100 150 200 250 Meters



- Yellow Trail 4.9 km Classic (Gentle - 100 Feet Elevation)
- Blue Trail 10.4 km Classic (Medium - 200 Feet Elevation)
- Orange Trail 5 km Freestyle (Challenging - 500 Feet Elevation)
- ⋯ Alternate Trails and shortcuts

Trail head is located north of Thornhill which is 5 miles west of Morden, north of PTH #3. Trails are groomed regularly. Donations for trail upkeep are gratefully accepted in donation box. For more information, contact David Lumgair  
Phone: (204) 822-3735 Email: [dlumgair@mts.net](mailto:dlumgair@mts.net)