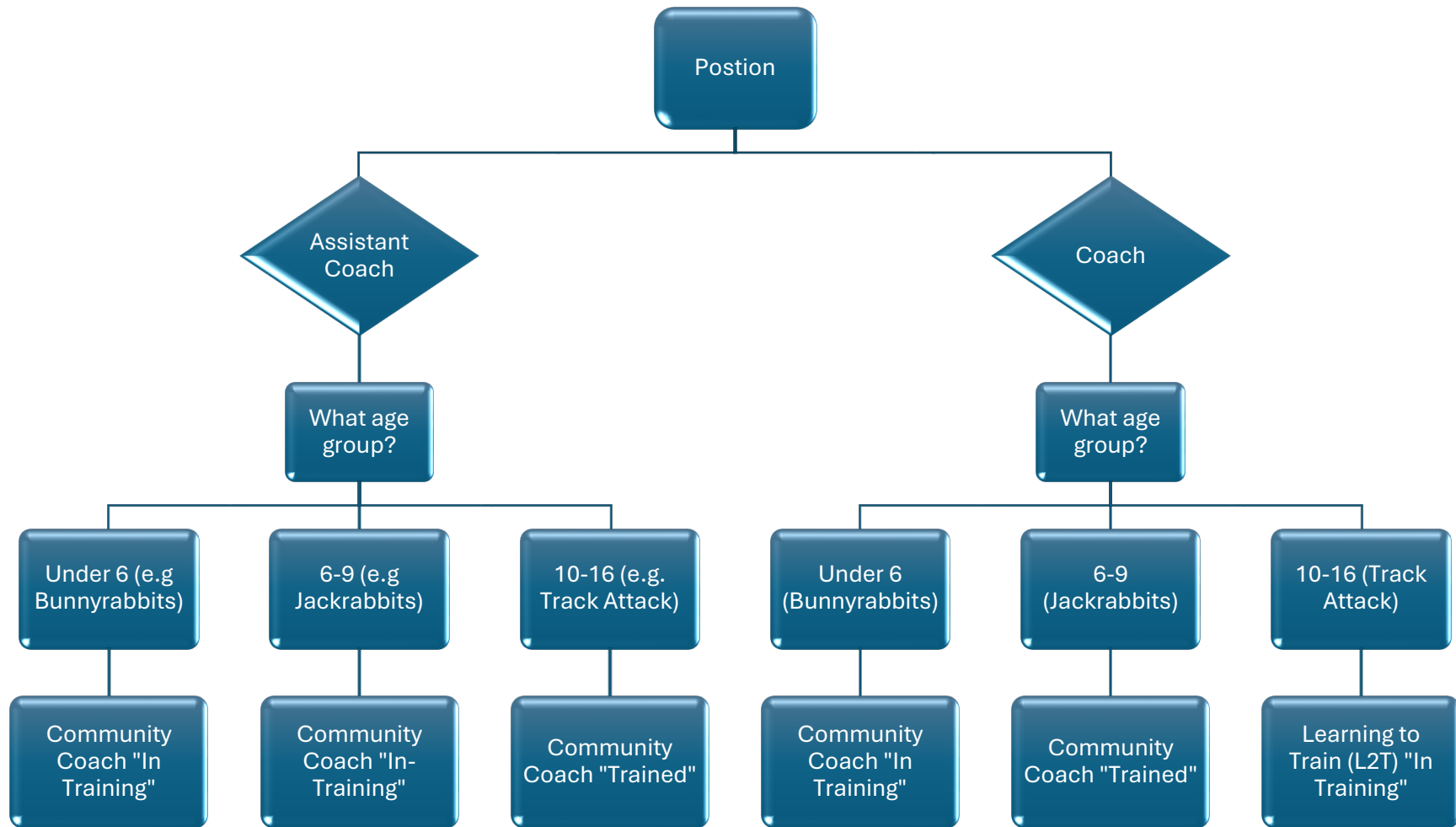


## MINIMUM MANDATORY COACHING QUALIFICATIONS (MMCQ) FLOWCHART



“Assisting” or “Assistant Coaching” applies only to coaching-related activities. Any person assisting in coaching-related activities must be actively and meaningfully supervised by a coach that is qualified in accordance with [Minimum Mandatory Coaching Qualifications] policy. Parents, chaperones, and other individuals who are present to ensure the comfort of participants or to provide other services are deemed not to be ‘assisting’ as long their primary purpose for attendance is not to provide coaching or instruction with respect to ski activities.

These are the MMCQ for every coach in a CCSAM club. Safe Sport policy requirements for coaches include a criminal record check, a character reference, *Respect in Sport for Activity Leaders* certification, Nordiq Canada Coach License registration, and The Locker eLearning modules *Safe Sport Training*, and *Understanding the Rule of Two*.

More information on coach training and screening requirements here: <https://ccsam.ca/competitive-coaching/programs/coaching-nccp/>

| Coaching Context  | Required Courses   | Next Steps  |
|---|--|---|
| All coaches:  | eLearning modules in The Locker: <ul style="list-style-type: none"> <li>• Coaching Initiation in Sport</li> <li>• Intro to Community Coaching</li> </ul> | Depends on your desired coaching context – Community Coach or Competition Coach?  |
| Community Coach “In Training”   | eLearning modules in The Locker: <ul style="list-style-type: none"> <li>• Coaching Initiation in Sport</li> <li>• Intro to Community Coaching</li> </ul> | Can now proceed to: <ul style="list-style-type: none"> <li>• Community Coaching (CC) workshop <i>or</i></li> <li>• Competition Coaching Intro (CCI) Learning to Train (L2T) workshop</li> </ul> |
| Community Coach “Trained”   | Community Coaching – 2 day classroom and on-snow workshop  | Can now proceed to: <ul style="list-style-type: none"> <li>• evaluation to become CC Certified <i>or</i></li> <li>• Competition Coaching Intro (CCI) Learning to Train (L2T)</li> </ul>         |
| Competition Coaching Introduction Learning to Train (L2T) “In Training” | L2T workshop – 2 day classroom and dryland (outdoor) workshop  | L2T On Snow workshop  |