



# Bittersweet

## CROSS COUNTRY SKI CLUB



NEWSLETTER • November 2018

### Trail Conditions

Hearty thanks to all those folks who came out to help clip the edges of the classic trails! All these trails look great, as the clipping has never been better. All trails have been mowed, an operation that took three days with the tractor and brush mower. Our number one chain saw operator and his partner cleared 30 fallen trees off the system on the Thanksgiving weekend.

Now we are ready for skiers. All we need is the snow!

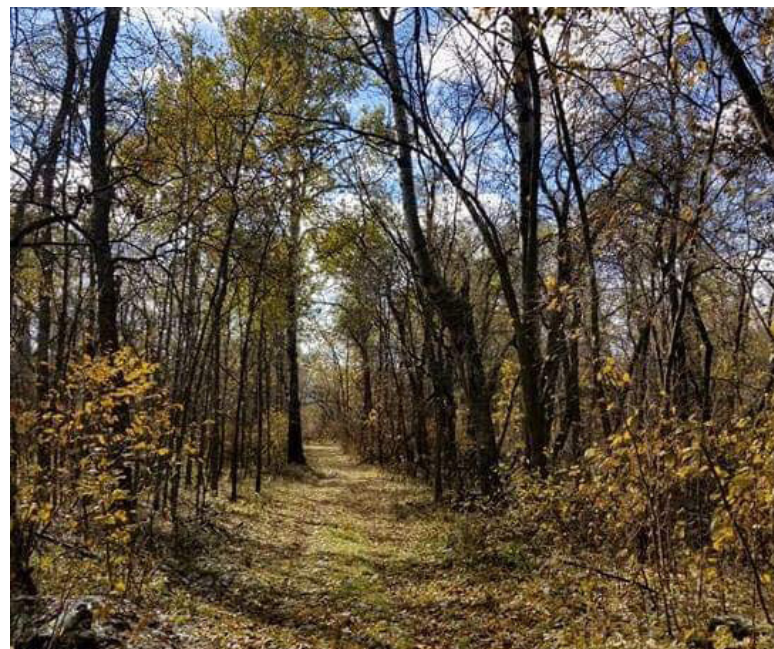


### Deer Hunting Season

Bittersweet Ski Club holds a Crown Lands Permit allowing our Club to have ski trails on Crown Land. We therefore have an obligation to alert our membership that deer hunting is also allowed on Crown land. Whereas hunting on private land requires permission from the landowner, all hunters are allowed on Crown Land. Anyone skiing on Crown Land during hunting season should wear outer garments of blaze orange, but we advise our members to stay off all of our trails during hunting season.

**BE SAFE!** Stay out of the woods during deer hunting season!

The deer hunting season closes December 2. We plan to start grooming trails right after that.





## Did you know the trees at Bittersweet Trails are hungry?

We all enjoy a maple cookie or two at the Bittersweet Nordic Centre after a long days ski.



But you know what maple cookies are made from, don't you? And did you know the trees at Bittersweet Trails get hungry too?



"I always eat the heads first".



"Mmmm....blueberry, my favourite." (Drool, drool)



"Aahhh, lemon. I always spit the skis and poles out after I've munched the soft bits".



"When I eat my skiers, I eat the red ones last, because red is best".





“Sniffle ... I wanted .... the blueberry one”.

“Hey you guys .... save a maple cookie for me!”



---

## Special Events:

### Our Big Ski Day, February 17, 2019

This year we are planning a Big Ski Day. This is your chance to ski your best distance in one day! This event is open to everyone, young and old, novice and pro

Skiers are asked to register at the Nordic Centre headquarters, where nutritious food will be available for them throughout the day. There is no entry fee for the day, but we would welcome your donation.

Big Ski Day is not a race, but a challenge! We will record the declared distances, from 5 to 50 K or even more! We expect there will be a few really BIG distances, (80-90 K), but will honour all those who achieve their best distances. Anyone who skis every trail on our system on that day will have skied 33 K !

So come out to Bittersweet on Sunday, February 17<sup>th</sup> and join in the fun.

**START TRAINING NOW!**



## FUND RAISING

We were so pleased that all of our red Bittersweet toques were sold! Thanks to everyone who supported this event. This year we are exploring another form of ski headwear to sell. Watch for it!



## Annual HBNI 5/10K Run

Once again, on a sunny October morning, 410 Hutterite runners of all ages gathered at the Nordic Centre for the annual 5/10K cross-country run. The parking lot was filled with rows of impressive buses from all across Manitoba, and even one from South Dakota! Fairholme Colony provided the post-run lunches. Precise timing was provided by Steve Gajerski of Winnipeg.

10K best race time was Donovan Hofer, Acadia School. His run time was 46:45. Daniel Waldner, Decker School was the first 5K finisher with a time of 25:38

Everyone certainly seemed to be having a good time!



Tel: (204) 272-5131

E-mail: [tirzahm@hbbookcentre.com](mailto:tirzahm@hbbookcentre.com)

## JACKRABBITS

We long to see the Jackrabbits program re-activated. Anyone who is willing to volunteer a few hours each week to help youngsters learn the fun of skiing is urged to contact Kim Young at [kyoung@pinecreeksd.mb.ca](mailto:kyoung@pinecreeksd.mb.ca).

